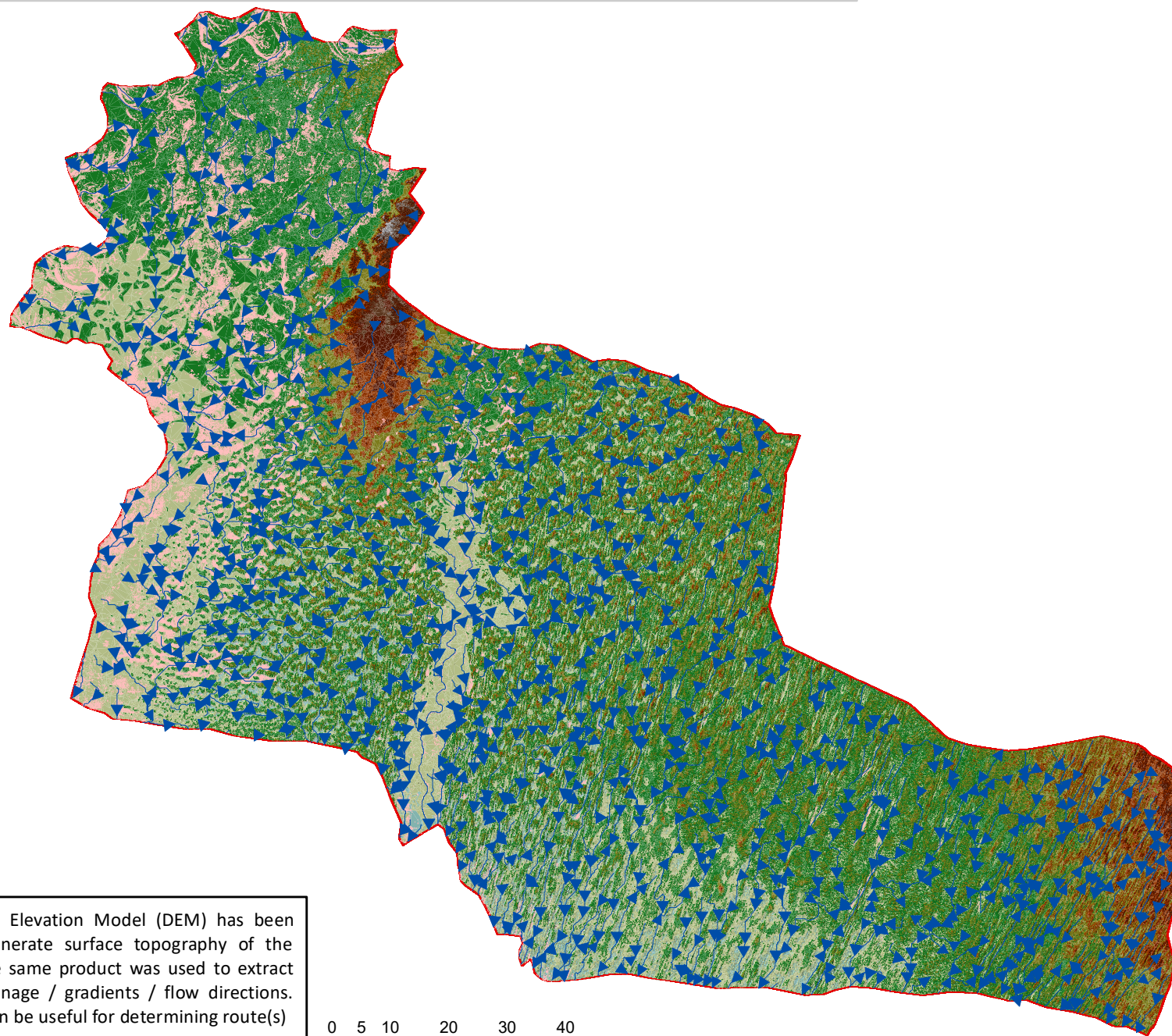


Natural Flow Directions - District Khairpur



5 m Digital Elevation Model (DEM) has been used to generate surface topography of the district. The same product was used to extract natural drainage / gradients / flow directions. This map can be useful for determining route(s)

0 5 10 20 30 40 Kilometers

Legend

- Flow Directions
- Flood Water Extent
- Elevation (in ft)**
 - 148.667 - 165
 - 132.333 - 148.667
 - 116 - 132.333
 - 99.667 - 116
 - 83.333 - 99.667
 - 67 - 83.333
 - 50.667 - 67
 - 34.333 - 50.667
 - 18 - 34.333



Preliminary flood damage assessment carried out using Disaster Management Information System (DMIS)
@ Provincial Emergency Operation Center (PEOC), PDMA Sindh.